

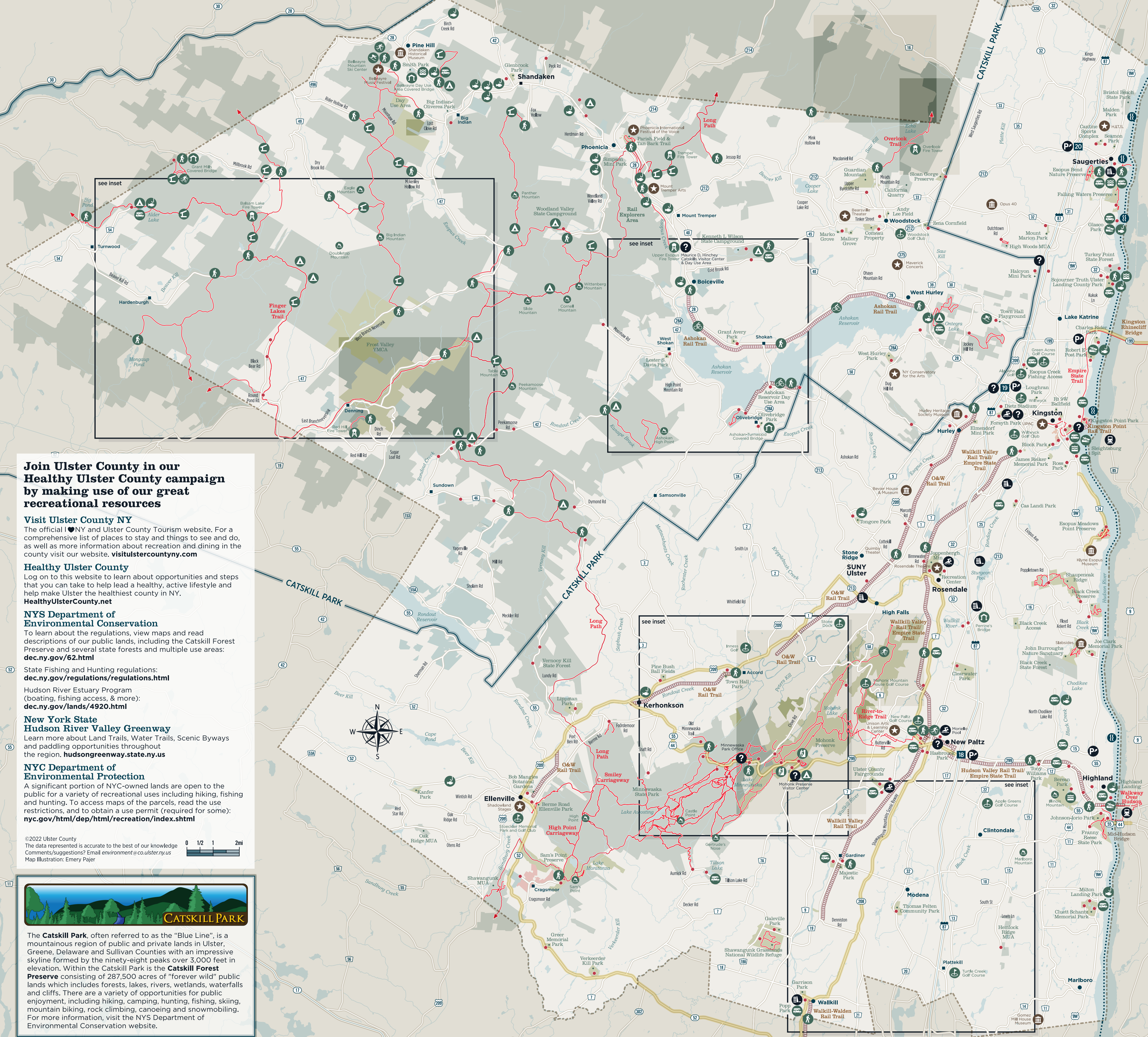
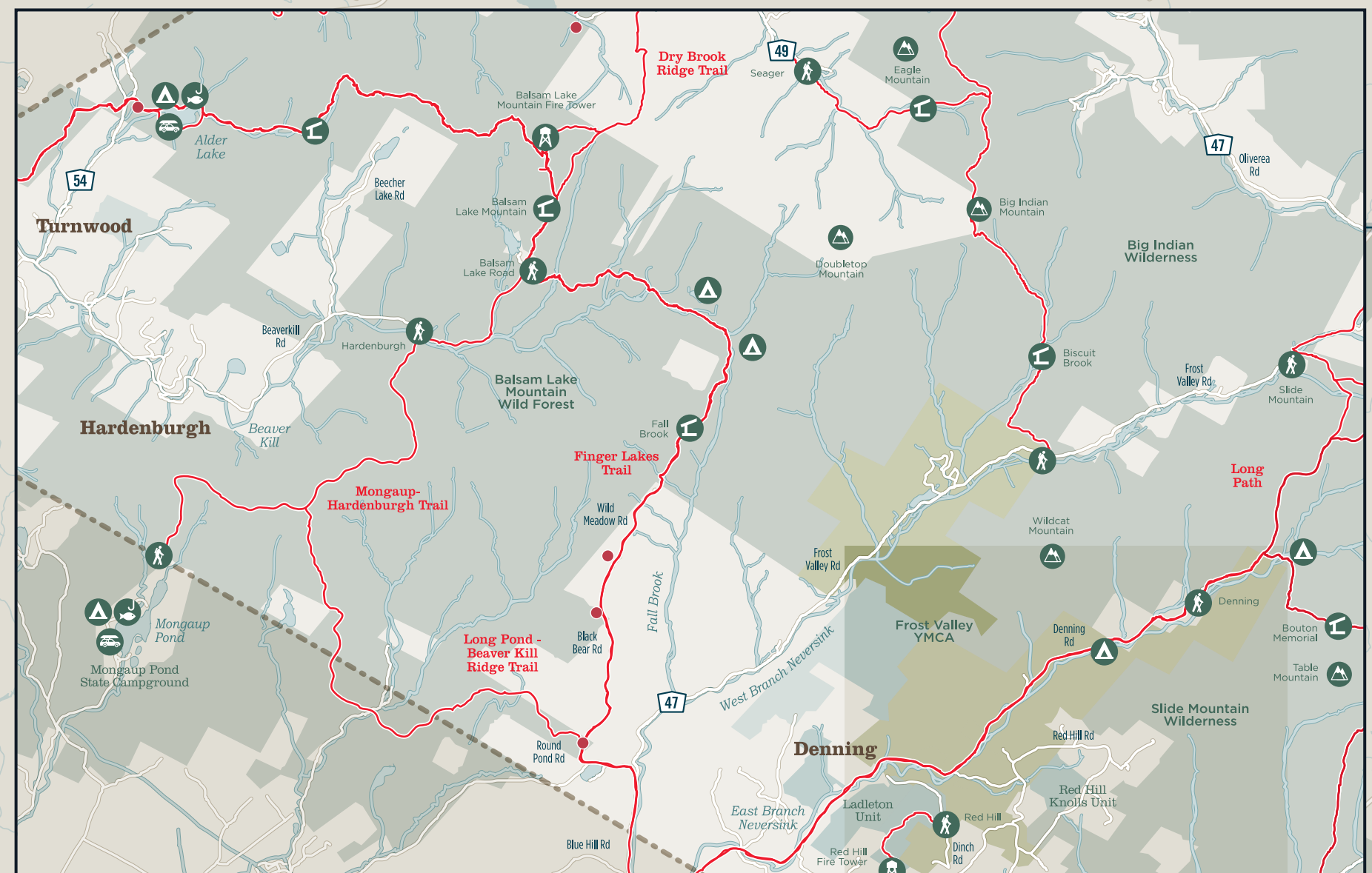
MAP LEGEND

- Access Point
- Parking
- NYS Thruway Exit
- Municipal/Other Recreation Lands
- DEP Public Access Areas (PAA)
- State Land
- Historic Districts
- Scenic Road
- Tourist Information
- Major Dam
- Park & Ride
- Pool
- Train Station
- Beach
- Car-Top Boat Launch
- Trailer Boat Launch
- Fire Tower
- Fishing Access
- Prominent Peak
- Ice Skating
- Lean-To
- Primitive Campsite
- Rock Climbing
- Ski Area
- Cross-Country Ski
- Trailhead
- Golf Course
- Covered Bridge
- Bike Route
- Museums/Attractions
- Performing Arts

Trails

- Recreational Trails
- Multi-Use Trail/Rail Trail
- Greenway Water Trail

Scan to access REConnect and map your next adventure



Join Ulster County in our Healthy Ulster County campaign by making use of our great recreational resources

Visit Ulster County NY
The official NY and Ulster County Tourism website. For a comprehensive list of places to stay and things to see and do, as well as more information about recreation and dining in the county visit our website, visitulstercounty.com

Healthy Ulster County
Log on to this website to learn about opportunities and steps that you can take to help lead a healthy, active lifestyle and help make Ulster the healthiest county in NY. HealthyUlsterCounty.net

NYS Department of Environmental Conservation
To learn about the regulations, view maps and read descriptions of our public lands, including the Catskill Forest Preserve and several state forests and multiple use areas: dec.ny.gov/62.html

State Fishing and Hunting regulations: dec.ny.gov/regulations/regulations.html

Hudson River Estuary Program (boating, fishing access, & more): dec.ny.gov/lands/4920.html

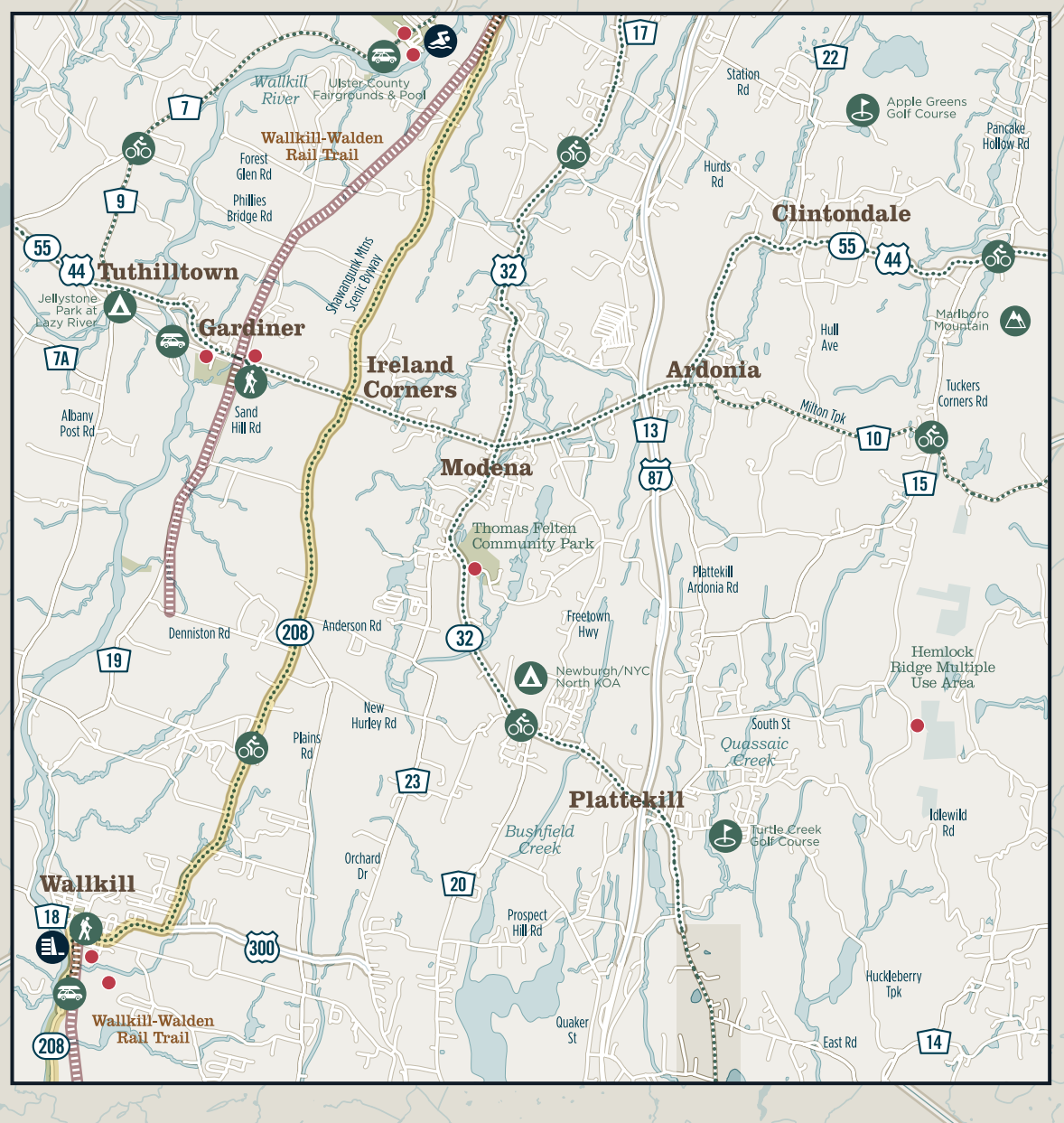
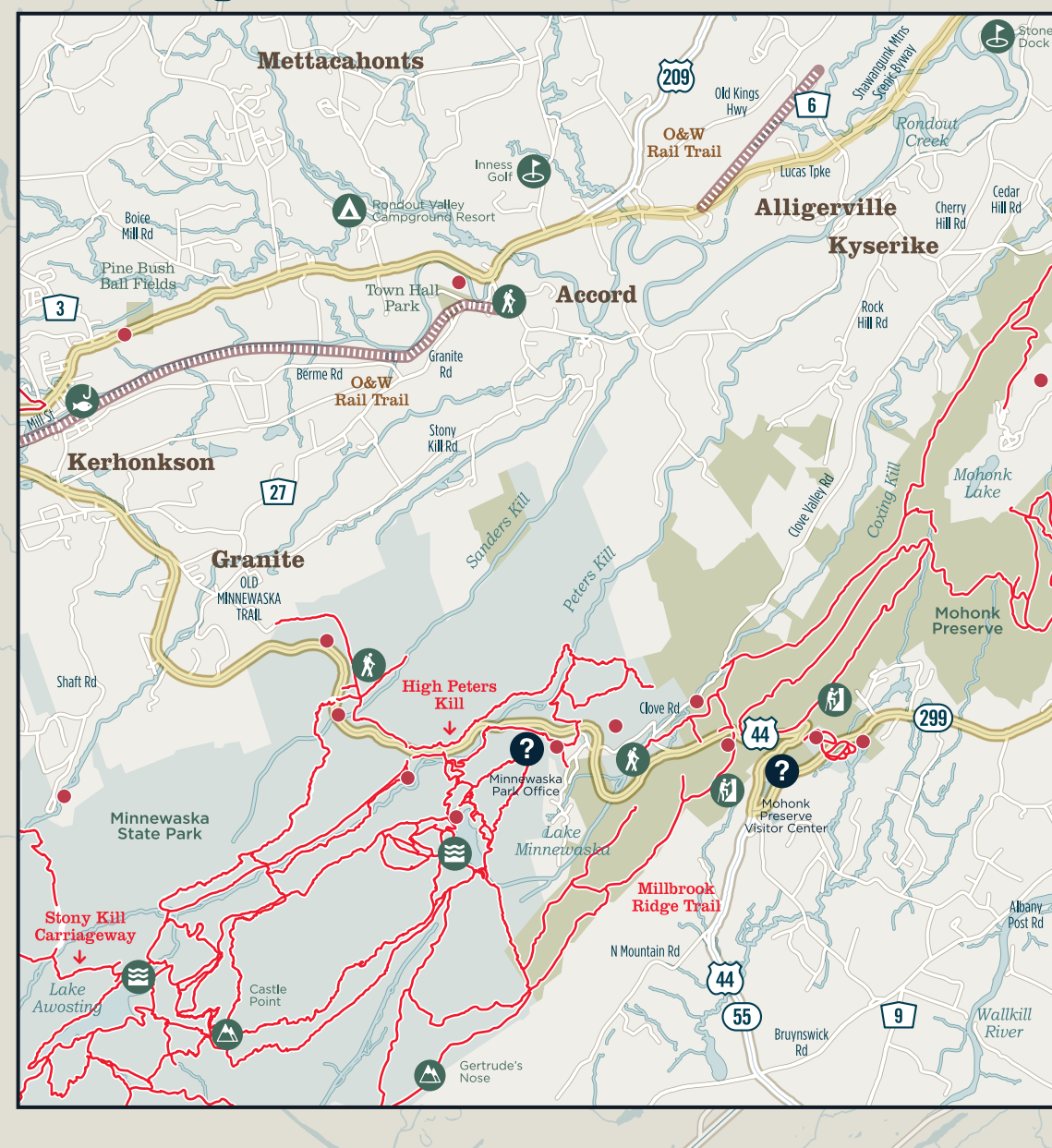
New York State Hudson River Valley Greenway
Learn more about Land Trails, Water Trails, Scenic Byways and paddling opportunities throughout the region. hudsongreenway.state.ny.us

NYC Department of Environmental Protection
A significant portion of NYC-owned lands are open to the public for a variety of recreational uses including hiking, fishing and hunting. To access maps of the parcels, read the use restrictions, and to obtain a use permit (required for some): nyc.gov/html/dep/html/recreation/index.shtml

©2022 Ulster County
The data represented is accurate to the best of our knowledge
Comments/Suggestions? Email environment@co.ulster.ny.us
Map Illustration: Emery Pajer

CATSKILL PARK

The Catskill Park, often referred to as the "Blue Line", is a mountainous region of public and private lands in Ulster, Greene, Delaware and Sullivan Counties with an impressive skyline formed by the ninety-eight peaks over 3,000 feet in elevation. Within the Catskill Park is the **Catskill Forest Preserve** consisting of 287,500 acres of "forever wild" public lands which includes forests, lakes, rivers, wetlands, waterfalls and cliffs. There are a variety of opportunities for public enjoyment, including hiking, camping, hunting, fishing, skiing, mountain biking, rock climbing, canoeing and snowmobiling. For more information, visit the NYS Department of Environmental Conservation website.



Ulster County

REConnect

With more than 1/3 of our land protected and open for outdoor recreation, we are a four-season destination with limitless outdoor opportunities.

REConnect, a powerful, interactive, online mapping tool is designed to help you explore all of Ulster County's recreational opportunities. It includes the vast areas of NYS Forest Preserve, dozens of community parks, other municipally-owned lands and nature preserves. Log on and begin planning your next Ulster County adventure now. Access the site at ulstercountyny.gov/maps/recreation.

Ulster County REConnect functions include Street, Aerial and Topographic views with various zoom levels, detailed information on trailheads, fishing access and boat launch locations, camping, swimming and much more. Additional features include creating personalized bookmarks, searching for specific addresses, drawing/measuring distance and printing customized maps.

For tourism information go to visitulstercountyny.com or call 1-800-342-5826.

For information about REConnect contact the Ulster County Department of the Environment; 845-338-7287 or email environment@co.ulster.ny.us.